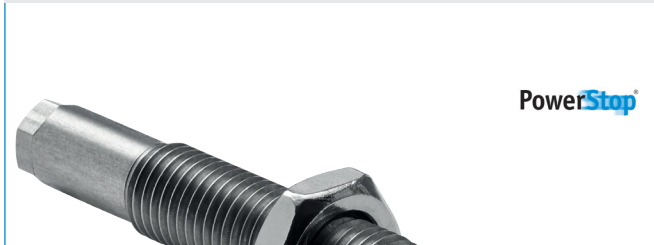


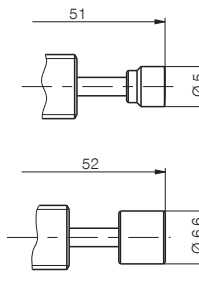
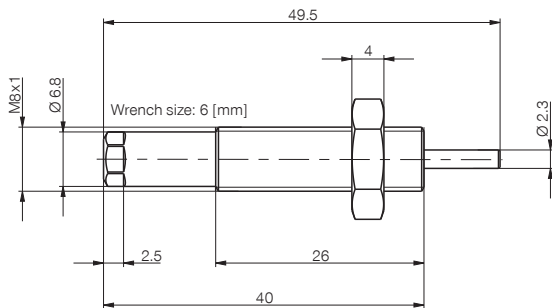
INDUSTRIAL SHOCK ABSORBER

SIZE M8X1



PowerStop®

- ▶ **Angle of Impact max.** 2 [°]
- ▶ **Weight with locknut** 15 [g]
- ▶ **Piston return time** 0.15 [s]
- ▶ **Min. return force** 1 [N]
- ▶ **Max. return force** 4 [N]
- ▶ **Permitted temperature range** -10 ... +70 [°C]



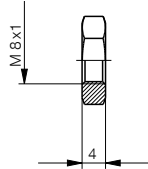
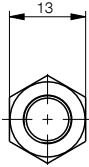
S: assembled with steel head

K: assembled with plastic head

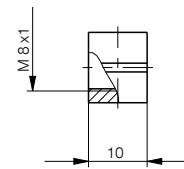
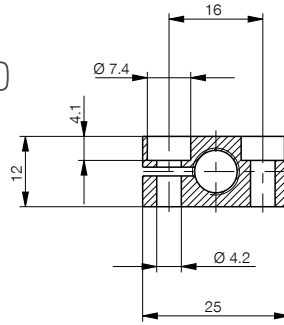
		▶ Technical data					
		Max. energy absorption		Stroke	Impact speed		
Order No.	HIGH ENERGY	Continuous operation	Emergency stop operation		[mm]	min.	max.
		per stroke	per hour	per stroke		[m/s]	
		[Nm]	[Nm/h]				
M8X1S		3	8,000	-	5	1.8	3.5
M8X1SS		3	8,000	-	5	1.8	3.5
M8X1SK		3	8,000	-	5	1.8	3.5
M8X1M		4	9,000	-	5	0.8	2.2
M8X1MS		4	9,000	-	5	0.8	2.2
M8X1MK		4	9,000	-	5	0.8	2.2

		▶ Technical data					
		Max. energy absorption		Stroke	Impact speed		
Order No.	STANDARD ENERGY	Continuous operation	Emergency stop operation		[mm]	min.	max.
		per stroke	per hour	per stroke		[m/s]	
		[Nm]	[Nm/h]				
M8X1RS		1.5	5,000	-	5	1.8	3.5
M8X1RSS		1.5	5,000	-	5	1.8	3.5
M8X1RSK		1.5	5,000	-	5	1.8	3.5
M8X1RM		1.5	5,000	-	5	0.8	2.2
M8X1RMS		1.5	5,000	-	5	0.8	2.2
M8X1RMK		1.5	5,000	-	5	0.8	2.2

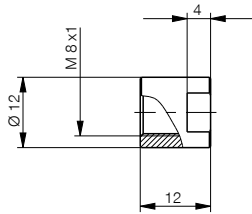
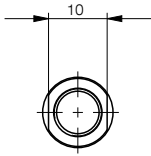
①



③



②

► Size: **M8X1**

Pos.	Accessories	Weight	Order no.
①	Steel locknut	3 [g]	MSM8X1
①	Stainless steel locknut	3 [g]	MVM8X1
②	Stop sleeve*	10 [g]	MAH8X1
③	Clamping flange	20 [g]	MKF8X1

Maximum fastening torque of locknut: 6 [Nm]

*inclusive Stainless-Steel locknut MVM